

# vanvino

TEXTILE FOR LIVING



## **SMART LIVING 2024 | BED & BATH LINEN**

HOSPITALITY  
SHORT & LONG TERM RENTALS  
COLIVING  
STUDENT HOUSING

[vanvino.store](https://vanvino.store)

Vanvino is a registered trademark ® which is dedicated to consultancy, design, manufacture and marketing of textile products for **hospitality** (hotels, short and long term rentals, coliving, student housing or senior living) and **home fashion** for brands.

@copyright 2024, **Vanvino**



## Vanvino® Services

### **Vanvino® Smart Living 150**

Manufacture and distribution of textiles for short and long-stay accommodation.

### **Vanvino® Contract Studio**

Design of high-end textile decoration projects and furniture distribution.

### **Vanvino® CasaDesign**

Design and manufacture of home textiles for small and large fashion and home brands.

### **Vanvino® Buyer Management**

Management of the production of large textile projects in the overseas market.

# Why Vanvino® Smart Living 150?

2

**The new textile management model for your accommodation.**

## **Manufacturing.**

**From 25 units per size in bed linen.  
Only 25 units!**

We manufacture from 25 units per product and size in bed linen and 300 units per product and size in bath linen. We deliver in **4 weeks** once the order has been confirmed. **Shipping costs are always included** in the manufacturing orders.

## **Stock Service.**

**Items available at your accommodation in 72 h.**

We have more than **2.000 references** of products in stock of different textile qualities and sizes. If there is availability of the garment you need you can have it in your accommodation in 72 hours. Shipping costs are estimated according to the volume of the order.

## **Your own brand labels.**

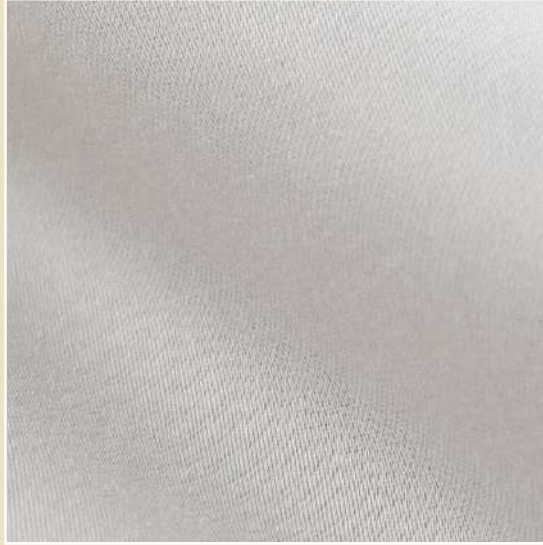
**We customize the textile of your accommodation**

At Vanvino, if you want to personalize your bath linen, we design the **labels with the brand** of your accommodation: we select the fabric of the label, the way of printing and we take care of its production. And if you want to **embroider your sheets**, we also create designs that adapt to your style or brand manual.



## **RECOMMENDED TEXTILE FOR BED LINEN**

HOSPITALITY  
SHORT & LONG TERM RENTALS  
COLIVING  
STUDENT HOUSING



## 150 THREAD COUNT

50% COTTON  
50% POLYESTER

## WHITE

### Durability and easy ironing

The blend of cotton and polyester makes the sheets more resistant to wear and tear and keep their shape and colour even after multiple washings. In addition, thanks to the presence of polyester, the sheets are less prone to creasing and much easier to iron, saving time, effort and money.



Request more information on other textiles:

200 TC 100% COTTON  
PERCALE | WHITE

300 TC 100% COTTON  
SATEN | WHITE

400 TC 100% EGIPTIAN  
COTTON | WHITE

160 GRM2 100% LINEN  
WHITE



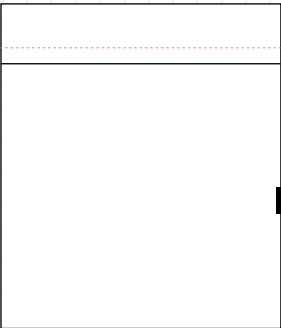
Ask for a sample and get to know the weaving and tailoring.

 Made by Vanvino®  
in Portugal

vanvino.store .es .fr

# Bed Linen

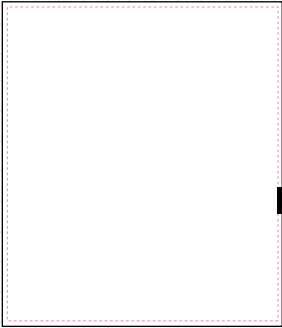
Our recommendation for smart accommodation is our bed linen made from our **150 Thread count 50% Cotton 50% Polyester** fabric, perfect for hotels, short and long term rentals, coliving, student residences and senior living.



## Top sheet

5 or 7 cm hem at the top and normal stitching. Side and bottom hems 1 cm. With or without personalised brand or accommodation label.

<b>090 cm</b>	160 x 290 cm
<b>105 cm</b>	180 x 290 cm
<b>140 cm</b>	220 x 290 cm
<b>150 cm</b>	240 x 300 cm
<b>160 cm</b>	260 x 300 cm
<b>180 cm</b>	300 x 300 cm



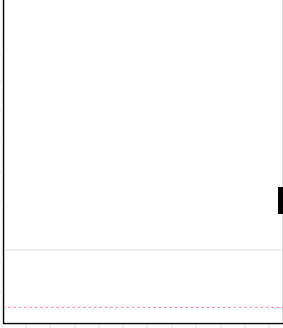
## Bottom sheet

1 cm hem at the top and bottom and on the sides. With or without personalised brand or accommodation label.

<b>090 cm</b>	160 x 290 cm
<b>105 cm</b>	180 x 290 cm
<b>140 cm</b>	220 x 290 cm
<b>150 cm</b>	240 x 300 cm
<b>160 cm</b>	260 x 300 cm
<b>180 cm</b>	300 x 300 cm

With elastic:

<b>090 cm</b>	090 x 190 cm
<b>105 cm</b>	105 x 190 cm
<b>140 cm</b>	140 x 190 cm
<b>150 cm</b>	150 x 200 cm
<b>160 cm</b>	160 x 200 cm
<b>180 cm</b>	200 x 200 cm



## Duvet cover

Open at the bottom with 40 cm flap and 5 cm hem with normal stitching. With or without personalised brand or accommodation label.

160 x 240 cm
180 x 220 cm
220 x 220 cm
240 x 240 cm
260 x 240 cm
280 x 240 cm

- ..... Normal stitching
- Flap limit
- Your brand label

Indicative and recommended sizes. We manufacture in all available sizes.

**Stock service available**

**vanvino.store .es .fr**



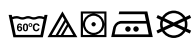
## Pillow cover

With 25 cm flap on one side and 5 cm hem with normal stitching. With or without personalised brand or accommodation label.

50 x 70 cm
60 x 60 cm
65 x 65 cm



**Ask for a sample** and get to know the weaving and tailoring.



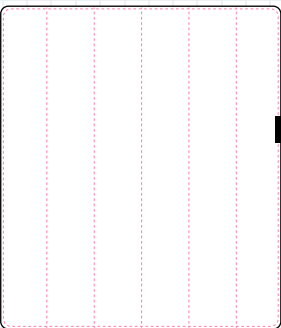
Made by Vanvino®  
in Portugal

[vanvino.store.es.fr](https://vanvino.store.es.fr)



# Fillings & protectors

We select for your accommodation duvets and protectors made of **high quality fabrics** and **resistant to washing cycles**.



## Duvet

White, 250 g/m<sup>2</sup>  
Outer fabric: Microfiber  
Interior fabric: 100% Polyester

- 150 x 220 cm
- 160 x 220 cm
- 180 x 220 cm
- 220 x 220 cm
- 240 x 220 cm
- 260 x 220 cm
- 260 x 240 cm
- 280 x 240 cm



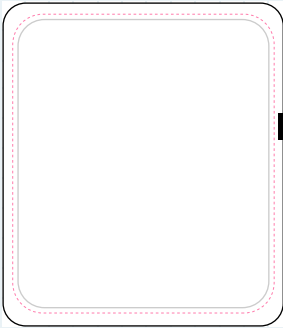
## Pillow

White, 750 g/m<sup>2</sup>  
Outer : 150 TC 50% Cotton |  
50% Polyester  
Interior fabric: 100% Polyester

- 50 x 70 cm
- 60 x 60 cm
- 65 x 65 cm

White, 750 gsm  
Outer fabric: Microfiber  
Interior fabric: 100% Polyester

- 50 x 70 cm
- 60 x 60 cm
- 65 x 65 cm



## Mattress Protector

White, 120 g/m<sup>2</sup>  
Jersey Knit 100% Cotton + PU  
With petticoat and elastic band around.

- 090 x 190 cm
- 120 x 200 cm
- 140 x 200 cm
- 150 x 200 cm
- 160 x 200 cm
- 180 x 200 cm
- 200 x 200 cm

- ..... Normal Stitching
- Flap limit
- Accommodation Label

Indicative and recommended sizes. We manufacture in all available sizes.



## Pillow Protector

White, 120 g/m<sup>2</sup>  
Jersey Knit 100% Cotton + PU  
With flap (without zip)

- 50 x 70 cm
- 60 x 60 cm
- 65 x 65 cm



**vanvino**

TEXTILE FOR LIVING

**RECOMMENDED TEXTILE FOR BED LINEN**

HOSPITALITY  
SHORT & LONG TERM RENTALS  
COLIVING  
STUDENT HOUSING

**vanvino.store**



**450 or 550 GR/M2**

**100% COTTON  
DOUBLE STITCHING**

**WHITE**

**Absorption and durability**

This fabric has high absorption capacity, allowing fast and efficient drying. The cotton quality provides exceptional softness, offering an exceptional comfort experience. The double stitching reinforces the structure of the towel, ensuring greater resistance to wear and tear and frequent washing, prolonging its useful life.



Request more information on other textiles (single or double yarn)

**400 GR/M2 100%  
COTTON | WHITE**

**500 GR/M2 100%  
COTTON | WHITE**

**600 GR/M2 100%  
COTTON | WHITE**

**650 GR/M2 100%  
COTTON | WHITE**



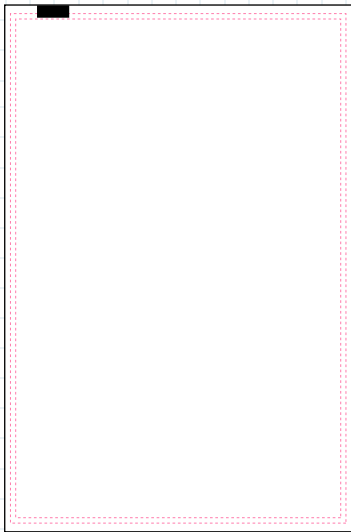
**Ask for a sample** and get to know the weaving and tailoring.



Made by Vanvino®  
in Portugal

# Bath Linen

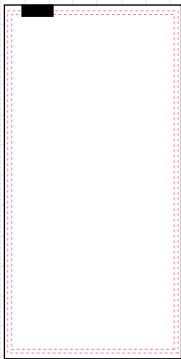
At Vanvino we recommend two different types of towels for smart accommodation: **450** and **550 GR/M2** , **always with double stitching** to ensure their resistance to time and industrial washing.



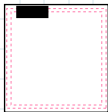
**Bath**  
100 x 150 cm



**Shower**  
70 x 140 cm



**Hand**  
50 x 100 cm



**Face**  
33 x 33 cm



**Bathmat**  
50 x 70 cm

## 450 GR/M2

**Classic and traditional thickness**

High Softness  
Low Shrinkage  
Double Stitching

## 550 GR/M2

**Fluffier and more consistent**

High Softness  
Low Shrinkage  
Double Stitching

- ..... Double Stitching
- Accommodation Label

Indicative and recommended sizes. We manufacture in all available sizes.

**Stock service available**

**vanvino.store .es .fr**

**Ask for information about bathrobes**



**Put your  
brand here,  
why not?**

**Ask for a sample** and get to know the weaving and tailoring.



Made by Vanvino®  
in Portugal

[vanvino.store.es.fr](https://vanvino.store.es.fr)

# Brand labels

We like each of our customers to personalise their products with **label designs** that suit their brand and essence. That is why we design and select the most suitable fabric for your label.

## Textile labels



**Woven, screen-printed,  
cotton, polyester, etc.**

We design your labels and propose the best options to put on your towel or sheet. We want to help your customers to remember your brand always during their stay.

**Ask how they work.**

## RFID labels

**Don't lose sheets and  
towels in the laundry**

We implement washable RFID tags on your bed and bath linen. These tags contain a microchip and an antenna to store and transmit information about each item to which they are attached. They facilitate inventory management, reduce error rates and textile loss.

**Ask how they work.**





# Color Bed Linen

In addition to the hospitality textile range, we offer you coloured bed linen with different finishes in 100% cotton from 200 thread count to give a touch of colour to your rooms.

**Request more information**

**Ask for a sample** and get to know the weaving and tailoring.

**vanvino.store .es .fr**





**Ask for a sample** and get to know the weaving and tailoring.

**vanvino.store .es .fr**



# Color Bath Linen

And if you don't like white towels and you want to give a little colour to the bathrooms of your accommodation, find the model and colour you need among a wide variety of models. Among them, you will find organic and combed cotton.

**Request more information**

**Ask for a sample** and get to know the weaving and tailoring.

# vanvino

TEXTILE FOR LIVING

## **SMART LIVING 2024 | BED & BATH LINEN**

HOSPITALITY  
SHORT & LONG TERM RENTALS  
COLIVING  
STUDENT HOUSING

[vanvino.store](https://vanvino.store)

[hello@vanvino.store](mailto:hello@vanvino.store)